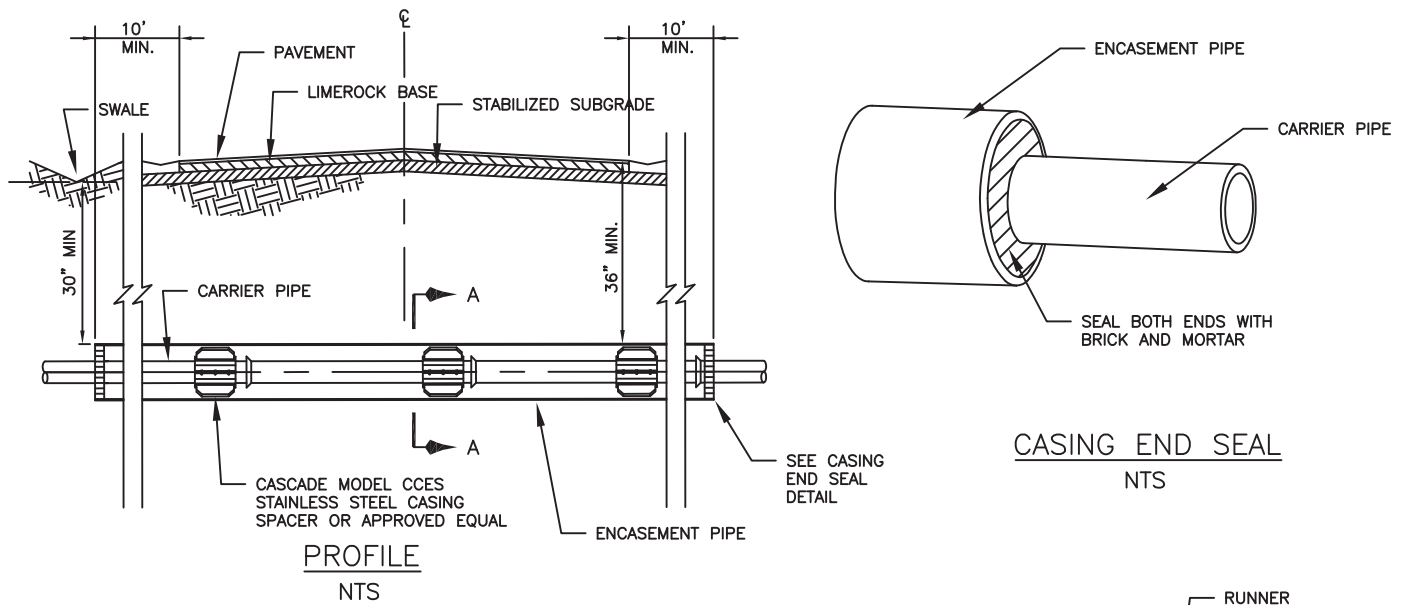


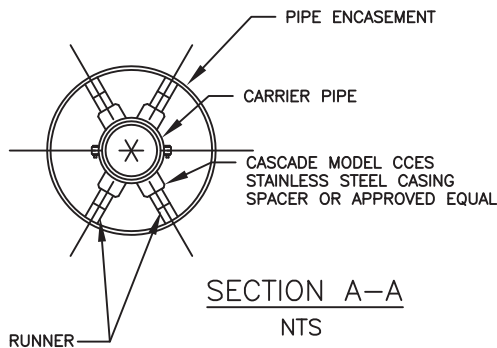
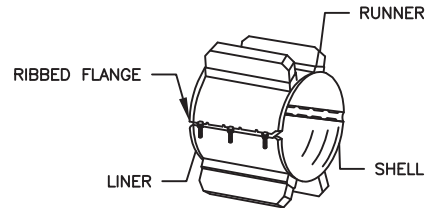
Bore and Jack Construction Details





NOTE:

1. UNDERGROUND CROSSINGS REQUIRE A MINIMUM VERTICAL CLEARANCE OF 36" BELOW PAVEMENT SURFACE, OR AS OTHERWISE SPECIFIED BY REGULATORY AGENCY HAVING RIGHT-OF-WAY JURISDICTION.
2. SEE DESIGN STANDARDS FOR CARRIER PIPE AND CASING PIPE REQUIREMENTS.



CARRIER PIPE	MINIMUM NUMBER OF RUNNERS	HEIGHT OF RUNNERS
2" - 10"	4	2"
12" - 24"	4	2.5"
30" - 36"	6	2.5"

SPACERS

1. CARRIER PIPE SHALL BE CENTERED WITHIN CASING BY USE OF MODEL CCS STAINLESS STEEL CASING SPACERS AS MANUFACTURED BY CASCADE WATER WORKS MFG. COMPANY OR APPROVED EQUAL. SPACERS FOR PIPES OVER 48" MAY REQUIRE THREE PIECE SHELLS. SHELL CONNECTORS ABOVE 48" WILL BE RECEIVER BAR/ WASHER PLATE TYPE.
2. SPACERS SHALL BE BOLT-ON STYLE WITH A TWO PIECE SOLID SHELL MADE FROM T-304 STAINLESS STEEL OF A MINIMUM 14 GA. THICKNESS. THE SHELL SHALL BE LINED WITH A RIBBED PVC SHEET OF A 0.090" THICKNESS THAT OVERLAPS THE EDGES. RUNNERS MADE FROM UHMW POLYMER, SHALL BE ATTACHED TO RISERS AT APPROPRIATE POSITIONS TO PROPERLY LOCATE THE CARRIER WITHIN THE CASING AND TO EASE INSTALLATION. RISERS SHALL BE MADE FROM T-304 STAINLESS STEEL OF A MINIMUM 14 GA. THICKNESS AND SHALL BE ATTACHED TO THE SHELL BY MIG WELDING. ALL WELDS SHALL BE FULLY PASSIVATED. ALL FASTENERS SHALL BE MADE FROM T-304 STAINLESS STEEL. CASING SPACERS SHALL BE MODEL CCS AS MANUFACTURED BY CASCADE WATER WORKS MFG. COMPANY OF YORKVILLE ILL. OR APPROVED EQUAL.
3. GENERAL- ONE SPACER SHALL BE PLACED NOT MORE THAN TWO FEET FROM EACH END OF CASING. SUBSEQUENT SPACERS SHALL BE PLACED AT 6'-10' INTERVALS WITHIN THE CASING, OR IN ACCORDANCE WITH PIPE MANUFACTURER'S RECOMMENDATIONS.

PVC CARRIER- ONE SPACER SHALL BE PLACED ON THE SPIGOT END OF EACH SEGMENT AT THE LINE MARKING THE LIMIT OF INSERTION INTO THE BELL. WHEN THE JOINT IS COMPLETE, THE SPACER SHALL BE IN CONTACT WITH THE BELL OF THE JOINT SO THAT THE SPACER PUSHES THE JOINT AND RELIEVES COMPRESSION WITHIN THE JOINT. SUBSEQUENT SPACERS SHALL BE PLACED AT 6'-10' INTERVALS, OR IN ACCORDANCE WITH MANUFACTURER'S RECOMMENDATIONS.

Revision Date:
10/28/2014



Gainesville Regional Utilities
Bore and Jack Construction Details

BORE AND JACK DETAIL