

RESTORATION PROCESS

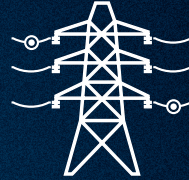
GRU'S RESTORATION EFFORTS ARE
FOCUSED ON PUBLIC SAFETY.

STORM SEASON IS JUNE 1 TO NOVEMBER 30.

1

Essential GRU Facilities

- Power Plants
- Water/Wastewater Facilities
- High Voltage lines & Substations



Critical Facilities

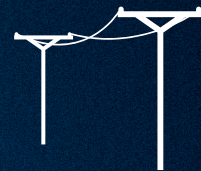
- Hospitals
- TV Stations
- Police Stations
- Shelters
- Fire Stations
- Nursing Homes
- Commercial Centers

2

3

Rapid Restoration

- Areas where we can restore power to the most people at one time.



Individual Homes and Businesses

- Small clusters of homes and individual homes and businesses.

4

GRU.COM/STORMCENTRAL



FOLLOW US ON TWITTER

[@GRUSTORMCENTRAL](https://twitter.com/GRUSTORMCENTRAL) FOR REAL-TIME OUTAGE UPDATES