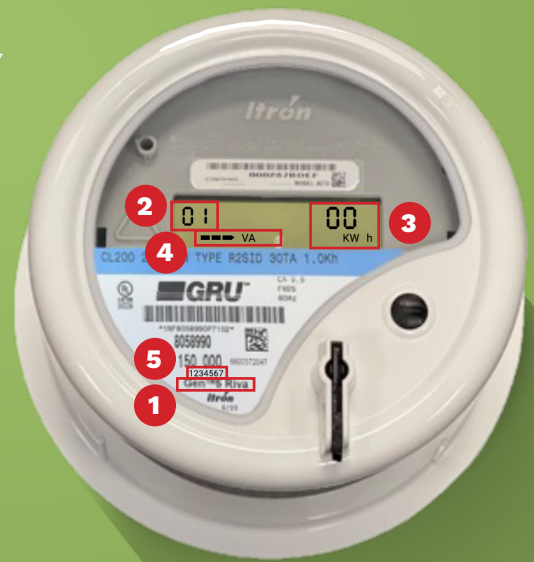




Getting to know your AMI electric meter



What is an AMI electric meter?

AMI stands for Advanced Metering Infrastructure. AMI meters securely capture and store energy-usage data using digital technology. Your meter is equipped with two-way radio communication so it can record and automatically send your energy usage to GRU. AMI meters provide many benefits, including giving customers more control over their energy usage and budgets.

GRU installed its first AMI meters in 2022 and will continue until all customers receive the benefits of this industry-best technology. GRU's AMI meters and modules are manufactured by Itron.

Why is AMI better for you?

Your meter keeps track of how much energy you use in a given time period.

Soon, you will have the ability to check your energy usage on a daily basis through GRU's online customer portal.

Don't forget ...

AMI meters combine radio and computer technologies to allow us to read your meter remotely. Certain conditions, however, can block the transmitted signal, and the meter reader may need to access your property to obtain a reading, test or repair the device.

How do I read an AMI electric meter?

Your AMI meter scrolls through several different displays that will give you energy usage information and tell you whether your meter is functioning properly.

- 1 This is your meter model.
- 2 This is a code (or register) that corresponds with the information displayed in 3

If the code in 2 reads...	Then the description in 3 means ...	This is useful information for ...
1	Total energy used since the meter was installed, measured in kWh, or kilowatt hours.	All electric customers.
2	kWh reading for solar net metering and solar Feed-in-Tariff customers.	Only Solar net metering and solar FIT customers.
7	Demand (instantaneous measurement of power) reading for certain commercial customers.	Commercial "Demand" customers.
8	Amount of solar power the customer has generated and placed on the grid.	Solar FIT customers.
nErE9	The state of the network; "nErE9" is the most common reading and indicates the network is functioning properly.	All electric customers.
All illuminated (looks like 8s)	This is a segment test. It will illuminate all LCD display segments to ensure the display is working properly.	All electric customers.

- 4 This shows how much energy you're consuming. The bars increase from left to right as you increase energy usage.
- 5 This is your meter number, which you can cross-reference on your bill.



GRUMeterUpgrade.com



[Electric rates page](#)

For more information,
call 352-334-3434