



More than Energy

**OFFICIAL RENTAL
LIGHTING CATALOG**

OCTOBER 1, 2024

Rental Light Rate Class (Non-Contributed):

This class of light rates are lights used by a commercial, industrial or residential customer where the monthly rental rate is paid for by the customer. The monthly Rental Light Rate includes all materials including wire, the cost of installation, maintenance and energy of the light(s). The rental rate for lights does not include the rental rate of a pole to support the light. If a pole is necessary to support a rental light, a separate pole rental rate shall be charged in addition to the rental rate for the light. The monthly Pole Rental Rate generally includes all materials, the cost of installation, removal and maintenance of the pole(s). The pole shall also be rented under this same class. *If a customer elects to terminate the five (5) year contract prior to the end of the 60 month period, the early removal fee shall be billed to the account for each month remaining on the contract.

LIGHT TYPE	CODE	*RATE	
LED ROADWAY 1 GRAY	L38	\$19.24	 L38, L39, L40, L41, L61, L62, L63, 764
LED ROADWAY 2 GRAY	L39	\$23.69	
LED ROADWAY 3 GRAY	L40	\$25.66	
LED ROADWAY 4 GRAY	L41	\$32.47	
LED ROADWAY 2 BLACK	L42	\$25.47	 L42, L43, L44, L65, L66, L67
LED ROADWAY 3 BLACK	L43	\$26.42	
LED ROADWAY 4 BLACK	L44	\$33.14	
LED ROUND ROADWAY	L51	\$51.90	 L51, L68
LED ACORN PEDESTRIAN	L52	\$37.82	
LED PENDANT ROADWAY	L55	\$51.52	
LED SMALL PENDANT PEDESTRIAN	L56	\$42.82	 L52, L69
LED FLOODWAY1	L57	\$19.34	
LED FLOODWAY2	L58	\$25.57	
LED FLOODWAY3	L59	\$28.73	 L70, L71
MCO LED ROADWAY 1 GRAY	L61	\$12.12	
MCO LED ROADWAY 2 GRAY	L62	\$15.33	 L55, L72
MCO LED ROADWAY 3 GRAY	L63	\$17.29	
MCO LED ROADWAY 4 GRAY	L64	\$24.10	 L56, L73
MCO LED ROADWAY 2 BLACK	L65	\$16.05	
MCO LED ROADWAY 3 BLACK	L66	\$16.99	 L57
MCO LED ROADWAY 4 BLACK	L67	\$23.71	
MCO LED ROUND ROADWAY	L68	\$45.76	 L58, L59
MCO LED ACORN PEDESTRIAN	L69	\$31.67	
MCO LED TEARDROP ROADWAY 2	L70	\$39.38	
MCO LED TEARDROP ROADWAY 4	L71	\$39.38	
MCO LED PENDANT ROADWAY	L72	\$35.23	
MCO LED SMALL PENDANT PEDESTRIAN	L73	\$27.27	

MCO=MASS CHANGE OUT
GRU owns all lights and poles.

NOTE: Monthly *Rates DO NOT include Fuel Adjustment Charges, Fees, or Taxes

OFFICIAL rates can be found in the City of Gainesville-Code of Ordinances-Appendix A, which supersedes this and any other publications.

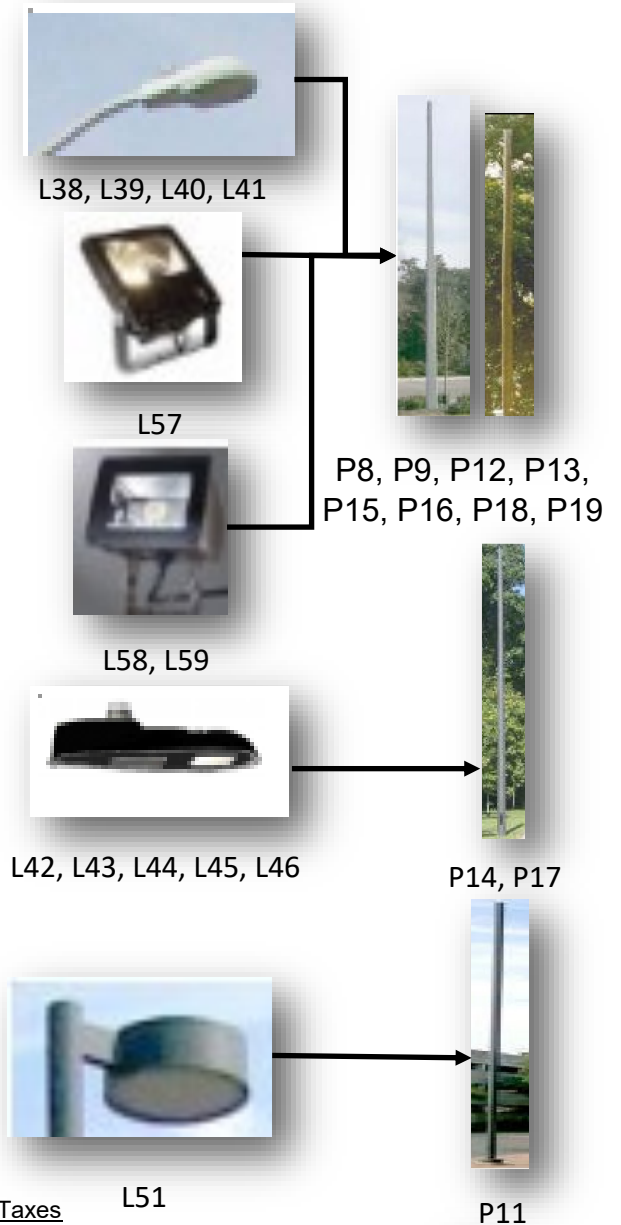
*RENTAL CONTRACT EARLY TERMINATION FEES:

PER MONTH REMAINING ON THE CONTRACT X PER LIGHT-\$15.00 | PER POLE-\$12.00

8/16/2024

Rental Pole Rate Class (Non-Contributed):

	POLE TYPE	CODE	*RATE
	10FT DECO BLACK CONC POLE	P01	\$23.63
	18FT BLACK DOMUS POLE	P05	\$34.03
	26FT BLACK RENAISSANCE POLE	P07	\$44.03
	30FT WOOD POLE	P08	\$17.40
	30FT CONCRETE POLE	P09	\$21.13
	30FT GRAY FIBERGLASS POLE	P10	\$31.73
	30FT BLACK ALUMINUM POLE	P11	\$35.29
	35FT WOOD POLE	P12	\$17.98
	35FT CONCRETE POLE	P13	\$21.18
	35FT BLACK OCT CONC POLE	P14	\$35.47
	40FT WOOD POLE	P15	\$21.92
	40FT CONCRETE POLE	P16	\$24.22
	40FT BLACK OCT CONC POLE	P17	\$41.23
	45FT WOOD POLE	P18	\$25.25
	45FT CONCRETE POLE	P19	\$25.00
	12FT BLACK STEEL POLE	P21	\$19.96



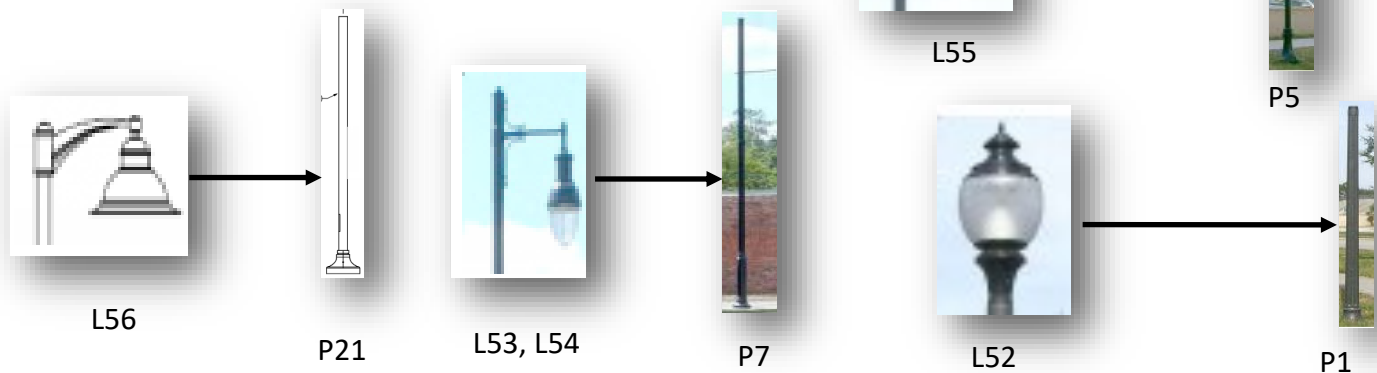
GRU owns all lights and poles.

NOTE: Monthly *Rates DO NOT include Fuel Adjustment Charges, Fees, or Taxes

OFFICIAL rates can be found in the City of Gainesville-Code of Ordinances-Appendix A, which supersedes this and any other publications.

*If a customer elects to terminate the five (5) year contract prior to the end of the 60 month period, the early removal fee shall be billed to the account for each month remaining on the contract.

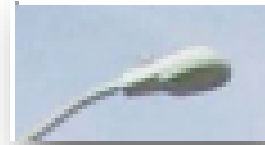
*RENTAL CONTRACT EARLY TERMINATION FEES:
 PER MONTH REMAINING ON THE CONTRACT X
 PER LIGHT-\$15.00 | PER POLE-\$12.00



Rental Agency Light Rate Class (Contributed):

This class of light rates are lights used by a commercial, industrial or residential customer and the monthly rental rate is paid for by the customer. The Rental Agency monthly rate, which allows the agency to buy down the rental rate, generally includes the energy charge and normal maintenance cost. The rates for lights do not include the installation of poles. The installation cost (materials, including wire, GRU engineering, construction cost and overheads) for lights and poles (if needed) shall be paid for up front by the customer responsible for the monthly rental charges prior to installation by GRU.

LIGHT TYPE	CODE	*RATE
LED ROADWAY 1 GRAY	L38	\$3.40
LED ROADWAY 2 GRAY	L39	\$5.48
LED ROADWAY 3 GRAY	L40	\$7.02
LED ROADWAY 4 GRAY	L41	\$11.24
LED ROADWAY 2 BLACK	L42	\$5.61
LED ROADWAY 3 BLACK	L43	\$6.96
LED ROADWAY 4 BLACK	L44	\$11.17
LED ROADWAY 5 GRAY	L45	\$10.31
LED ROADWAY 5 BLACK	L46	\$10.42
LED ROUND ROADWAY	L51	\$15.37
LED ACORN PEDESTRIAN	L52	\$7.31
LED TEARDROP ROADWAY 2FT	L53	\$10.96
LED TEARDROP ROADWAY 4FT	L54	\$10.96
LED PENDANT ROADWAY	L55	\$7.94
LED SMALL PENDANT PEDESTRIAN	L56	\$6.21
LED FLOODWAY1	L57	\$2.85
LED FLOODWAY2	L58	\$6.50
LED FLOODWAY3	L59	\$9.66



L38, L39, L40, L41



L42, L43, L44, L45, L46



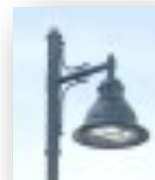
L51



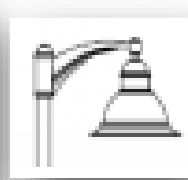
L52



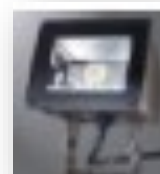
L53, L54



L55



L56



L57



L58, L59

GRU owns all lights and poles.

NOTE: Monthly *Rates DO NOT include Fuel Adjustment Charges, Fees, or Taxes

OFFICIAL rates can be found in the City of Gainesville-Code of Ordinances-Appendix A, which supersedes this and any other publications.

NOTE: A POLE RENTAL IS NOT PART OF THE AGENCY (CONTRIBUTED) PROGRAM